

## Gligor Denkovski Memorial Tourney

To commemorate the 70th birthday of Gligor Denkovski (20 August 1946 – 15 January 2015), a formal composing tourney is announced in three sections.

**Section A: Orthodox proof games**, showing a combination of at least one typical retro theme and at least one theme or motif traditionally seen in other problem genres. See examples. Judge: Kostas Prentos

**Section B: Orthodox helpmate threemovers (h#2.5–3)** with free theme. Judge: Nikola Predrag

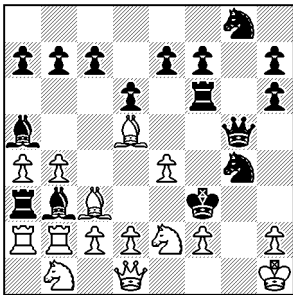
**Section C: Orthodox selfmates (s#2–n)** with free theme. Judge: Miodrag Mladenović

Closing date for all sections is **31 March 2017**. Entries should be sent to Ivan Denkovski, email: [denkovski@hotmail.com](mailto:denkovski@hotmail.com)

The awards will be published in a special publication, which will be sent to all participants. Prizes (books) are provided for the best entries.

Examples for section A:

Gligor Denkovski & Ivan Denkovski  
4th H.M. *Die Schwalbe* 2009

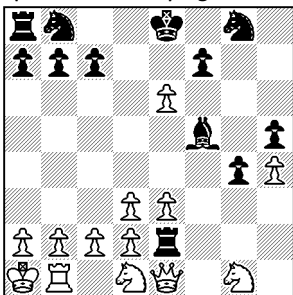


PG 25.5 (15+16)

1.e4 Sf6 2.Qh5 Rg8 3.Qh6 gxh6 4.a4 Rg3 5.Ra2 Ra3 6.g4 Bg7 7.g5 Sg4 8.g6 Bc3 9.g7 Ba5 10.b4 d6 11.Bb2 Be6 12.g8Q+ Kd7 13.Bh8 Bb3 14.Qg7 Ke6 15.Qa1 Sd7 16.Sc3 Sdf6 17.Bc4+ Ke5 18.Bd5 Kf4 19.Sge2+ Kf3 20.0-0 Qg8 21.Rb1 Qg5 22.Rbb2 Rg8 23.Qd1 Rg6 24.Sb1 Sg8 25.Bc3 Rf6 26.Kh1

The Pronkin theme (a promoted piece moves to the initial game-array square of a captured piece of same type and colour) is a typical retro theme. In order that the promoted wQ finds a way to d1, Loyd's line clearance (13.Bb2-h8!) is performed.

Ivan Denkovski & Gligor Denkovski  
Sp. H.M. *Champagne Tourney*, Portorož 2002



PG 20.0 (13+12)

1.h4 d5 2.Rh3 d4 3.Re3 dxe3 4.Sc3 Qd3 5.exd3 Bh3 6.Qf3 e2 7.g4 exf1R+ 8.Ke2 Rxc1 9.Qg3 Rf1 10.Re1 h5 11.Kd1 Rh6 12.Kc1 Re6 13.Kb1 Re2 14.Ka1 e6 15.Rb1 Bc5 16.Sd1 Be3 17.fxe3 Rf5 18.gxf5 g5 19.fxe6 Bf5 20.Qe1 g4

Orthogonal-diagonal correspondence between the play on the orthogonal line a1–e1 and the play on the diagonal line c8–h3. The cyclic exchange of places between pieces (wR, wN, wQ and wK on their home squares) is another traditional problem motif. The Ceriani–Frolkin theme (a promoted piece is captured) is a typical retro theme.

Please reprint.